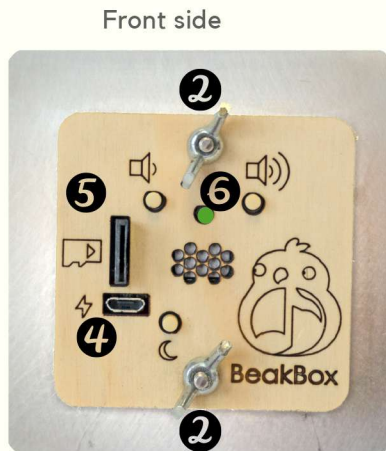
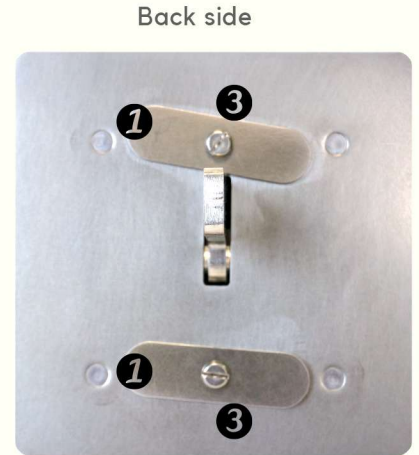


# Installation



1. Washers
2. Wingnuts
3. Bolts
4. USB port
5. SD card slot
6. Indicator-LED



01

Unscrew the wingnuts from the BeakBox by rotating them anti-clockwise.

02

Remove the bolts with the oval washers attached.

03

Place the metal part of the BeakBox against the outside of the cage so the lever sticks through between the bars. Ensure the lever is in the position where it is free to move.

04

While holding the BeakBox, reach into the cage and place the bolts, with washers attached, into the top and bottom mounting holes.

05

Screw wingnuts onto the bolts. Ensure the oval washer is horizontal and firmly tighten the wingnut.

06

Your BeakBox is now installed. Insert a micro-SD card with tunes into the slot and plug it into a USB port. Indicator LED should turn green. Press the lever and enjoy the music

## Parts in the box:

- BeakBox x1
- USB cable x1
- Washers x2
- Bolts x2
- Wingnuts x2